



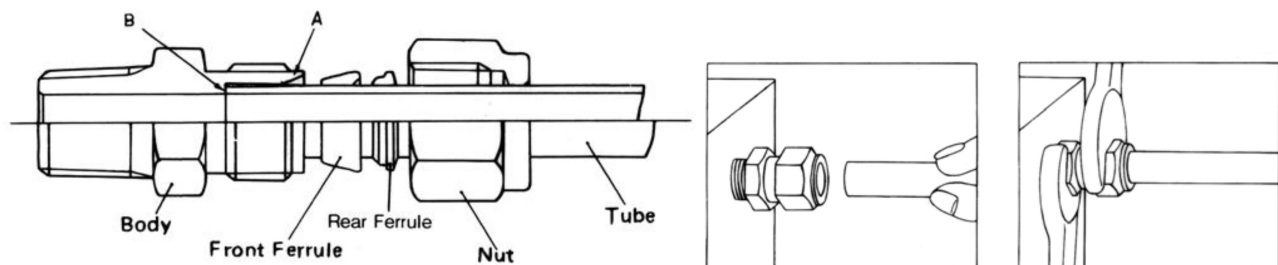
**Material:** SUS304, SUS316 STAINLESS STEEL & BRASS

**Thread Option:** NPT, PT, BST, NPS, PS, BSP.

**Japsin Tube Fittings** ensure a secure, leak-proof, and torque-free seal for all tubing connections, effectively preventing costly and hazardous leaks in instrumentation and process tubing. The fitting's mechanism operates axially along the tube rather than through rotational motion. Since no torque is transferred from the fitting to the tubing, there is no initial strain that could compromise the tubing's integrity. For safe and reliable performance, a comprehensive system design must be considered. It is the responsibility of the system designer and user to ensure material compatibility, appropriate ratings, proper installation, operation, and maintenance.

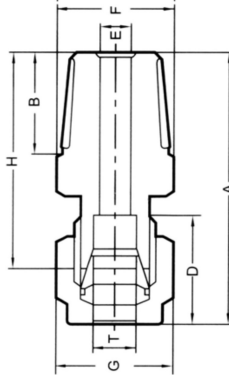
To ensure reliable performance, Japsin Tube Fittings are engineered with four precision-crafted components, manufactured to strict tolerances under rigorous quality control. The high consistency and quality of these precisely matched components make them suitable for even the most demanding applications. Each fitting consists of a Nut, Back Ferrule, Front Ferrule, and Body, forming a secure five-piece connection when attached to the tubing. The two-ferrule design, along with the fitting's sequential action, compensates for variations in tube material, wall thickness, and hardness, ensuring safe, dependable, and leak-free connections. Additionally, Japsin Tube Fittings are easy to install without the need for special tools.

### **ASSEMBLY INSTRUCTIONS & REASSEMBLY INSTRUCTIONS**





**Model:- JI-MC (Male Connector)**



With easy installation and a torque-free connection, Japsin Male Connectors enhance system integrity while reducing maintenance requirements. Their high-quality construction makes them ideal for use in chemical, petrochemical, power generation, and other critical industries.

Manufactured with precision under stringent quality controls, Japsin Male Connectors feature a robust design that ensures reliable sealing without the need for additional sealing compounds. They are available in various thread configurations, including NPT, BSP, and metric threads, to suit diverse industrial applications.

**Metric**

Tube OD	PT-NPT-Male Pipe Size	Catalogue Number	A	B	D	E	F	G	H
2	1/8	JI-MC-2-1	30.8	10	12.9	1	10	10	24.2
3	1/8	JI-MC-3-1	30.8	10	12.9	2	10	10	24.2
3	1/4	JI-MC-3-2	30.8	13	12.9	2	14	10	27.8
4	1/8	JI-MC-4-1	31.5	10	13.7	3	10	12	24.9
4	1/4	JI-MC-4-2	35.1	13	13.7	3	14	12	28.5
4	3/8	JI-MC-4-3	37.1	14	13.7	3	17	12	30.5
4	1/2	JI-MC-4-4	41.1	17	13.7	3	22	12	35.5
6	1/8	JI-MC-6-1	33.1	10	15.3	5	14	14	25.7
6	1/4	JI-MC-6-2	36.7	13	15.3	5	14	14	29.3
6	3/8	JI-MC-6-3	38.2	14	15.3	5	17	14	30.8
6	1/2	JI-MC-6-4	42.7	17	15.3	5	22	14	35.3
8	1/8	JI-MC-8-1	34.5	10	16.2	5	14	17	27.0
8	1/4	JI-MC-8-2	37.5	13	16.2	6	14	17	30.0
8	3/8	JI-MC-8-3	39.1	14	16.2	6	17	17	31.6
8	1/2	JI-MC-8-4	43.6	17	16.2	6	22	17	36.1
10	1/8	JI-MC-10-1	36.6	10	17.2	5	19	19	29.0
10	1/4	JI-MC-10-2	39.7	13	17.2	6	19	19	32.1
10	3/8	JI-MC-10-3	40.7	14	17.2	8	19	19	33.1
10	1/2	JI-MC-10-4	44.5	17	17.2	8	22	19	36.9
10	3/4	JI-MC-10-6	47.0	19	17.2	8	27	19	40.4
12	1/8	JI-MC-12-1	39.1	10	22.8	5	22	22	29.0
12	1/4	JI-MC-12-2	42.2	13	22.8	6	22	22	32.1
12	3/8	JI-MC-12-3	43.2	14	22.8	8	22	22	33.1
12	1/2	JI-MC-12-4	47.0	17	22.8	10	22	22	36.9
12	3/4	JI-MC-12-6	50.5	19	22.8	10	27	22	40.4
12	1	JI-MC-12-8	55.3	22	22.8	10	34	22	45.2
14	3/8	JI-MC-14-3	43.9	14.0	24.4	8	24	27	33.8
14	1/2	JI-MC-14-4	47.0	17.0	24.4	10	24	27	36.9
14	3/4	JI-MC-14-6	50.5	19.0	24.4	10	27	27	40.4
15	3/8	JI-MC-15-3	47.0	14	24.4	8	24	27	33.8
15	1/2	JI-MC-15-4	49.0	18	24.4	10	24	27	36.9
15	3/4	JI-MC-15-6	50.5	19	24.4	10	27	27	40.5



**Model:- JI-MC (Male Connector)**

**Metric**

Tube OD	PT-NPT- Male Pipe Size	Catalogue Number	A	B	D	E	F	G	H
16	3/8	JI-MC-16-3	43.9	14	24.40	8	24	27	33.8
16	1/2	JI-MC-16-4	47.0	17	24.40	10	24	27	36.9
16	3/4	JI-MC-16-6	50.5	19	24.40	12	27	27	40.4
18	3/8	JI-MC-18-3	45.5	14	24.40	8	27	30	35.4
18	1/2	JI-MC-18-4	48.5	17	24.40	10	27	30	38.4
18	3/4	JI-MC-18-6	50.5	18	24.40	15	27	30	40.4
18	1	JI-MC-18-8	55.3	22	24.40	15	34	30	45.2
20	1/2	JI-MC-20-4	50.4	17	26.0	10	30	32	40.2
20	3/4	JI-MC-20-6	52.3	19	26.0	15	30	32	42.2
22	1/2	JI-MC-22-4	50.3	17	26.0	10	30	32	40.2
22	3/4	JI-MC-22-6	52.3	19	26.0	16.5	30	32	42.2
22	1	JI-MC-22-8	55.2	22	26.0	16.5	34	32	45.2
25	1/2	JI-MC-25-4	55.50	17	31.3	10.0	34	38	43.2
25	3/4	JI-MC-25-6	57.50	19	31.3	16.5	34	38	45.2
25	1	JI-MC-25-8	60.40	22	31.3	20.0	34	38	48.1

**Fractional**

TUBE O.D.	PT-NPT Male Pipe Size	CATALOG NUMBER	A	B	D	E	F	G	H
1/16	1/8	JI-MC-005-1	26.5	10.0	8.6	1	10	10	22.7
1/16	1/4	JI-MC-005-2	29.8	13.0	8.6	1	14	10	26.0
1/8	1/8	JI-MC-01-1	30.8	10.0	12.7	3	12	10	24.2
1/8	1/4	JI-MC-01-2	34.4	13.0	12.7	3	14	10	27.8
1/8	3/8	JI-MC-01-3	35.6	14.0	12.7	3	17	10	29.0
1/8	1/2	JI-MC-01-4	40.1	17.0	12.7	3	22	10	33.5
3/16	1/8	JI-MC-015-1	31.5	10.0	13.7	3	12	12	24.9
3/16	1/4	JI-MC-015-2	35.1	13.0	13.7	3	14	12	28.5
1/4	1/8	JI-MC-02-1	33.1	10.0	15.3	5	14	14	27.7
1/4	1/4	JI-MC-02-2	36.6	13.0	15.3	5	14	14	29.3
1/4	3/8	JI-MC-02-3	38.2	14.0	15.3	5	17	14	30.8
1/4	1/2	JI-MC-02-4	42.6	17.0	15.3	5	22	14	35.1
1/4	3/4	JI-MC-02-6	46.1	19.0	15.3	5	27	14	38.8
3/8	1/8	JI-MC-03-1	35.6	10.0	16.8	5	17	17	28.2
3/8	1/4	JI-MC-03-2	38.8	13.0	16.8	6	17	17	31.3
3/8	3/8	JI-MC-03-3	39.8	14.0	16.8	8	17	17	32.3
3/8	1/2	JI-MC-03-4	44.1	17.0	16.8	8	22	17	36.8
3/8	3/4	JI-MC-03-6	47.7	19.0	16.8	8	27	17	40.3
1/2	1/8	JI-MC-04-1	39.2	10.0	22.8	5	22	22	29.0
1/2	1/4	JI-MC-04-2	42.2	13.0	22.8	6	22	22	32.1
1/2	3/8	JI-MC-04-3	43.2	14.0	22.8	8	22	22	33.1
1/2	1/2	JI-MC-04-4	46.9	17.0	22.8	10	22	22	36.8
1/2	3/4	JI-MC-04-6	50.4	19.0	22.8	10	27	22	40.3
1/2	1	JI-MC-04-8	55.2	22.0	22.8	10	35	22	45.0
5/8	3/8	JI-MC-05-3	43.9	14.0	24.4	8	24	27	33.8



**Model:- JI-MC (Male Connector)**

Fractional									
TUBE O.D.	PT-NPT Male Pipe Size	CATALOG NUMBER	A	B	D	E	F	G	H
5/8	1/2	JI-MC-05-4	46.9	17.0	24.4	10	24	27	36.8
5/8	3/4	JI-MC-05-6	50.4	19.0	24.4	12	27	27	40.3
3/4	1/2	JI-MC-06-4	48.4	17.0	24.4	10	27	30	38.2
3/4	3/4	JI-MC-06-6	50.4	19.0	24.4	15	27	30	40.3
3/4	1	JI-MC-06-8	55.2	22.0	24.4	15	35	30	45.0
1	1/2	JI-MC-08-4	55.4	17.0	31.3	10	35	38	43.1
1	3/4	JI-MC-08-6	57.4	19.0	31.3	16.5	35	38	45.1
1	1	JI-MC-08-8	60.4	22.0	31.3	20	35	38	48.1